

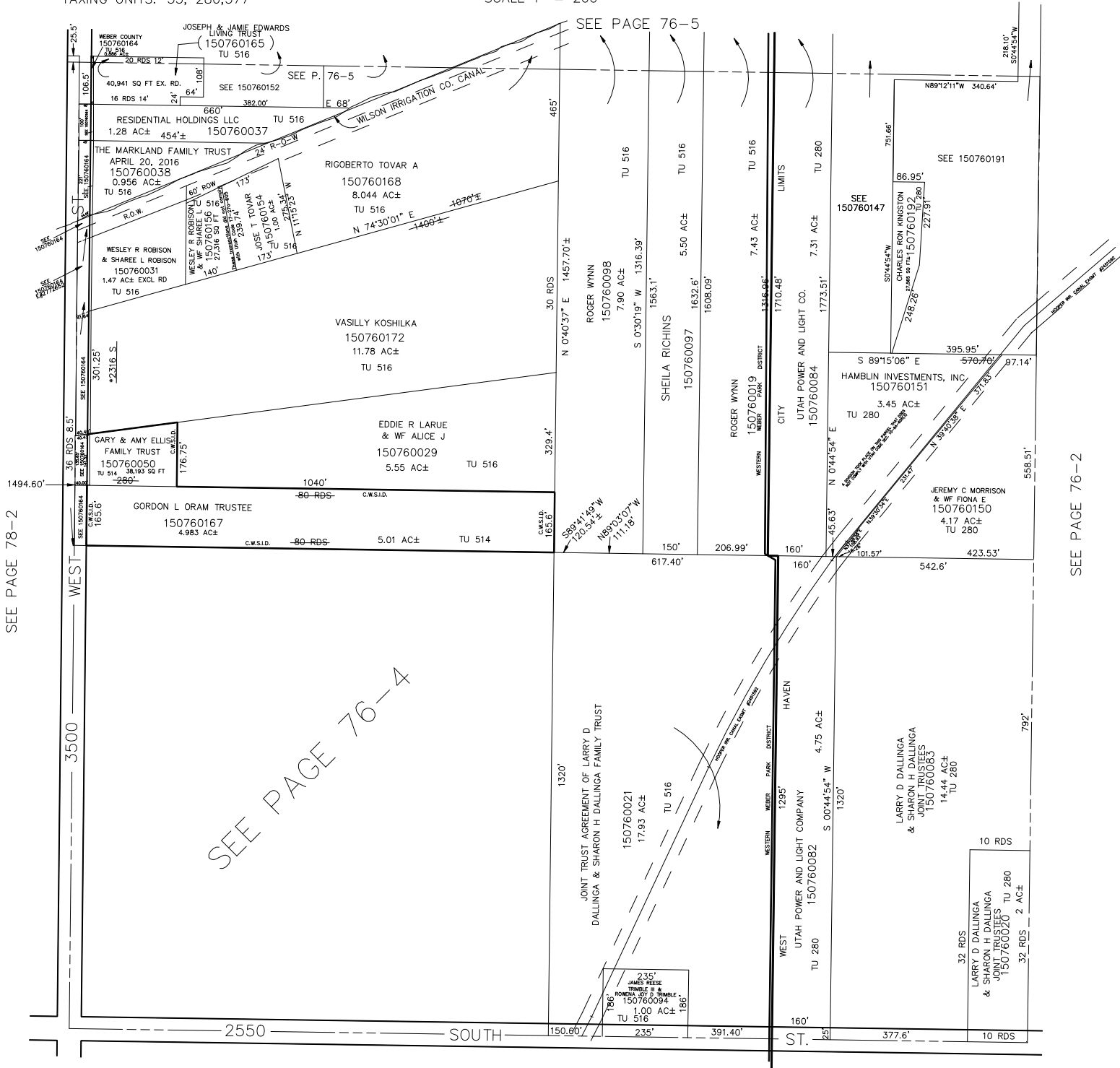
SW 1/4  
SECTION 27, T.6N., R.2W., S.L.B. & M.

IN WEST HAVEN CITY & WEBER COUNTY

TAXING UNITS: 53, 280,377

SCALE 1" = 200'

SEE PAGE 76-5



SEE PAGE 78-2

SEE PAGE 76-4

SEE PAGE 76-2

\*ADDRESS AFFIDAVIT E@2985344

SEE PAGE 92